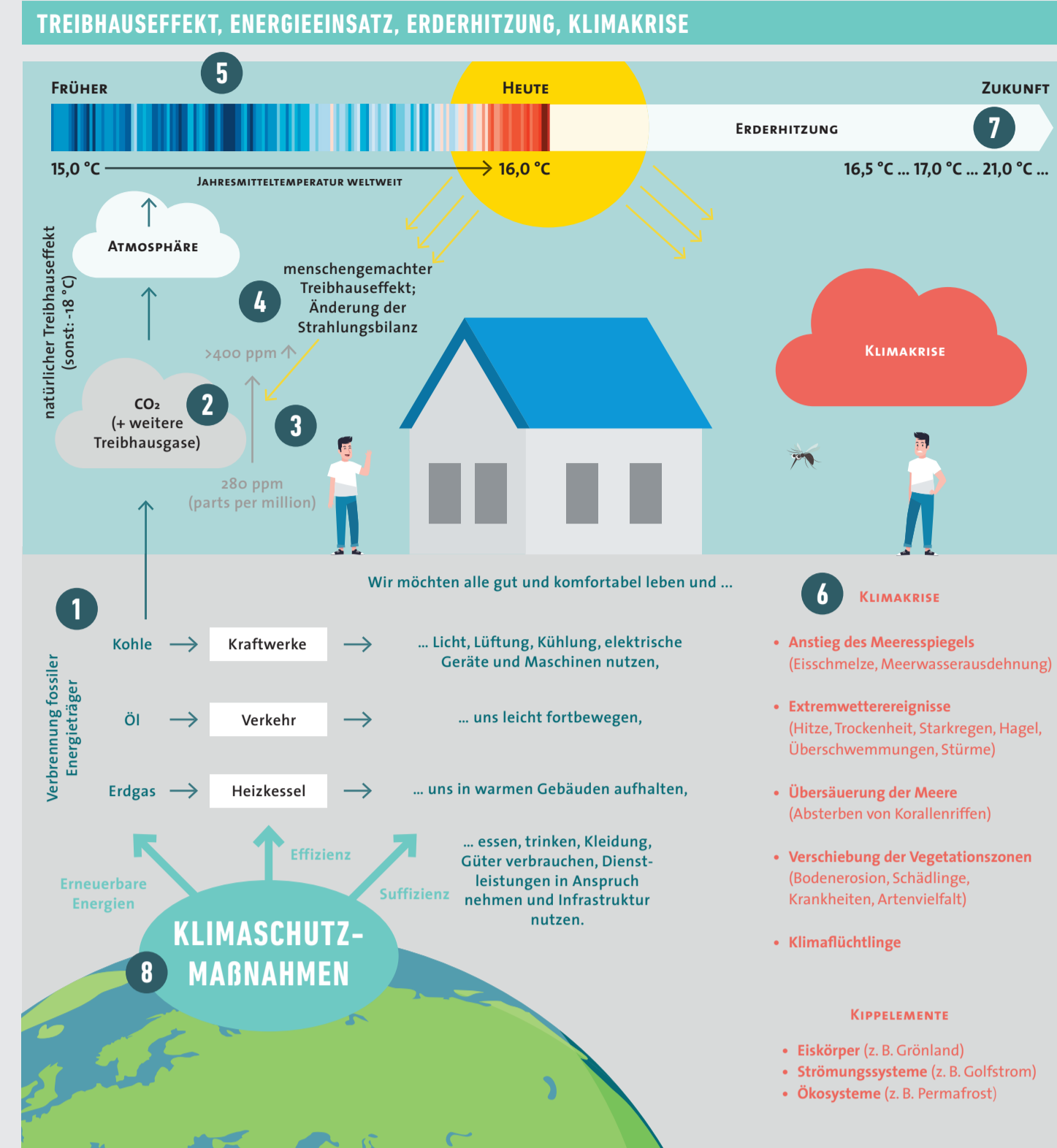


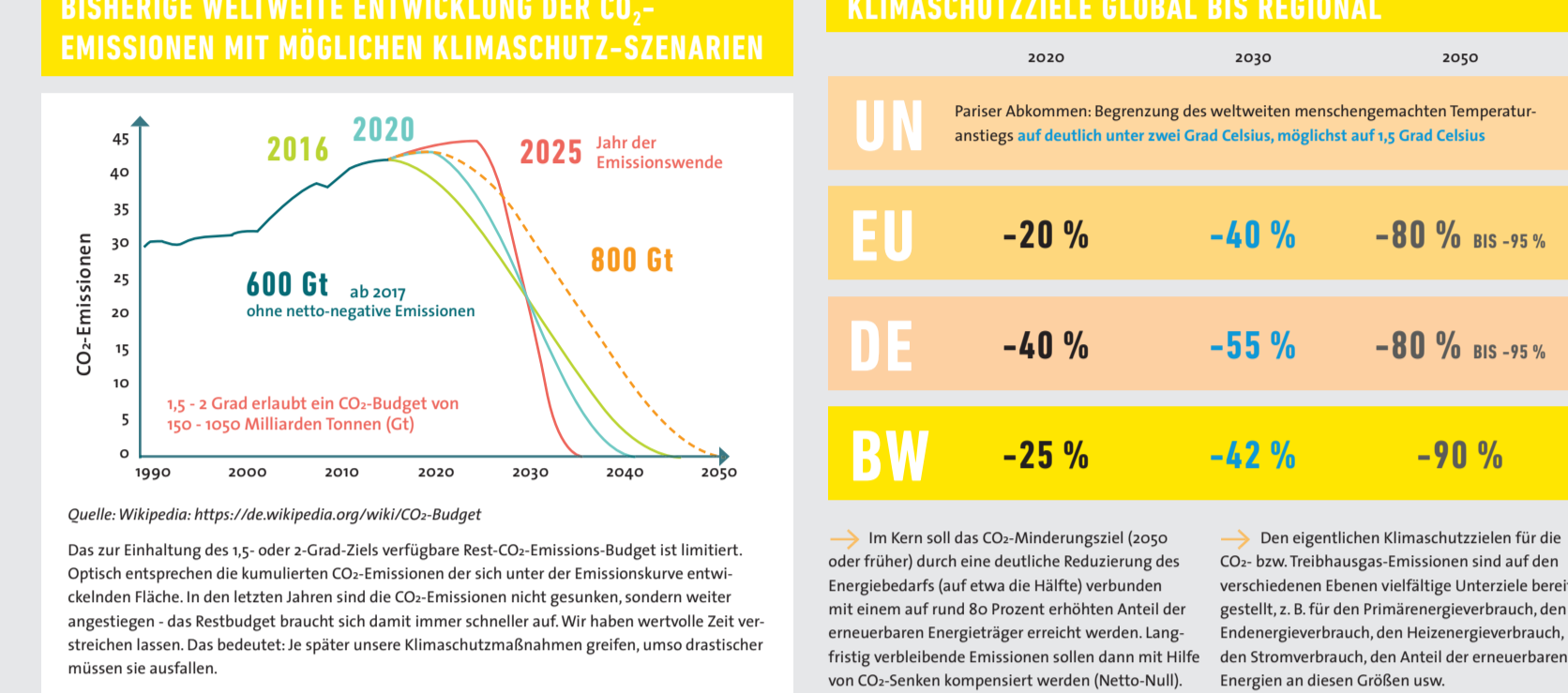
UNSERE MOTIVATION



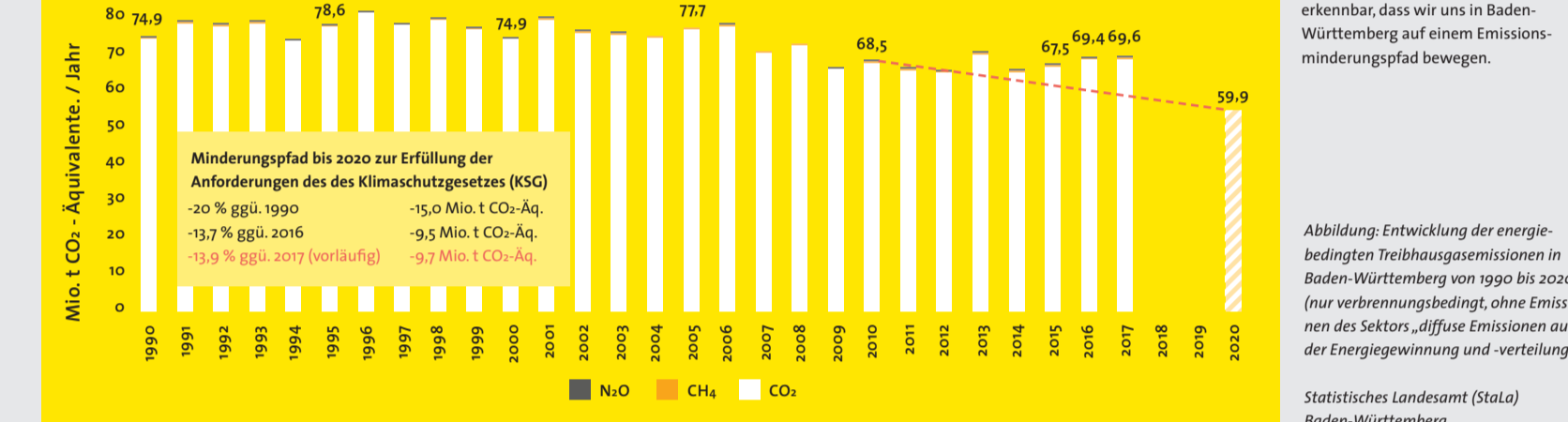
MITREDEN KÖNNEN



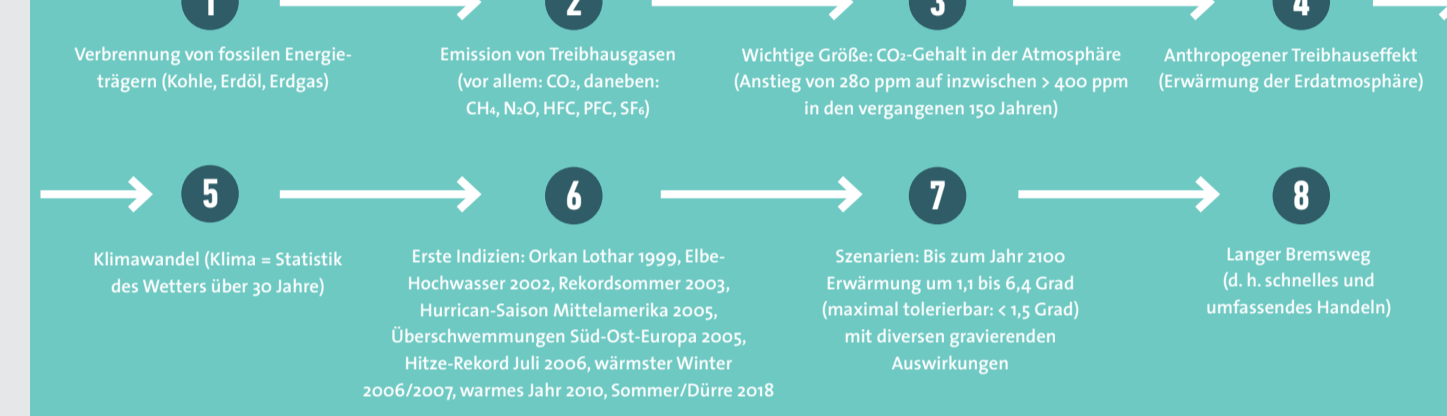
EMISSIONSENTWICKLUNG & KLIMASCHUTZZIELE



ENTWICKLUNG DER ENERGIEBEDINGTEN TREIBHAUSAUS-EMISSIONEN IN BADEN-WÜRTTEMBERG SEIT 1990



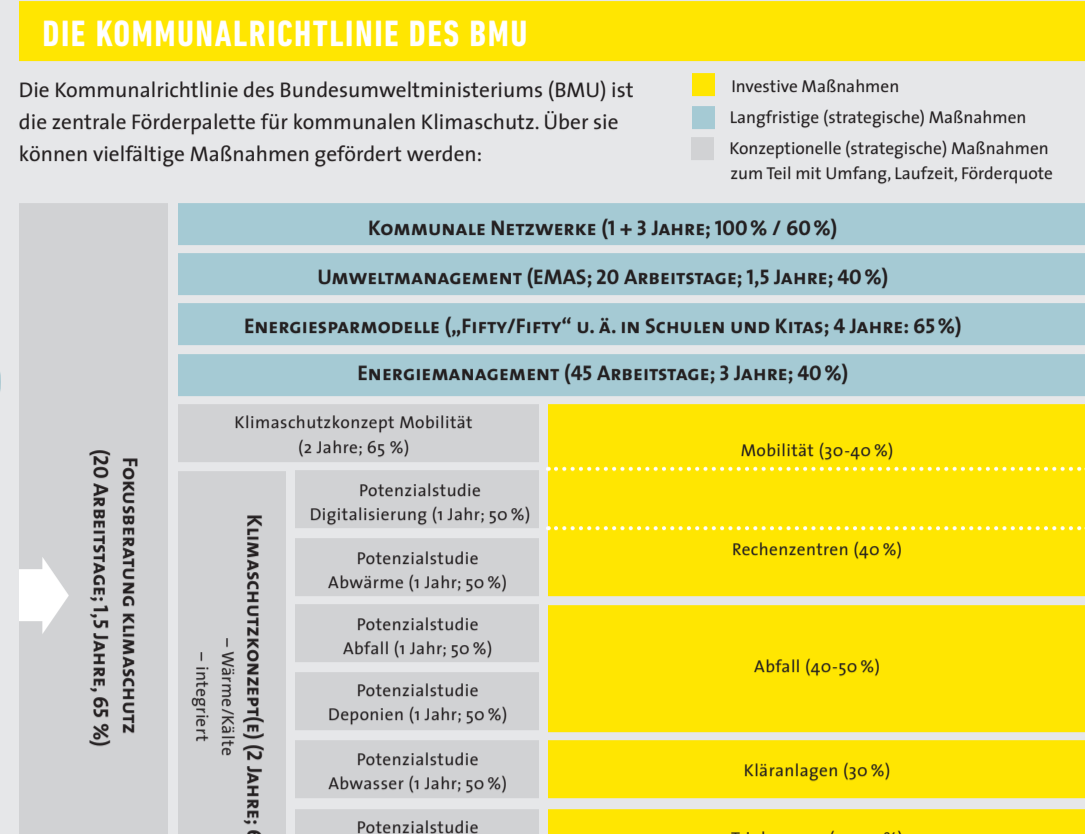
WIRKUNGSKETTE



FÖRDERPROGRAMME



INSTRUMENTE & MAßNAHMEN



ÖFFENTLICHKEITSARBEIT

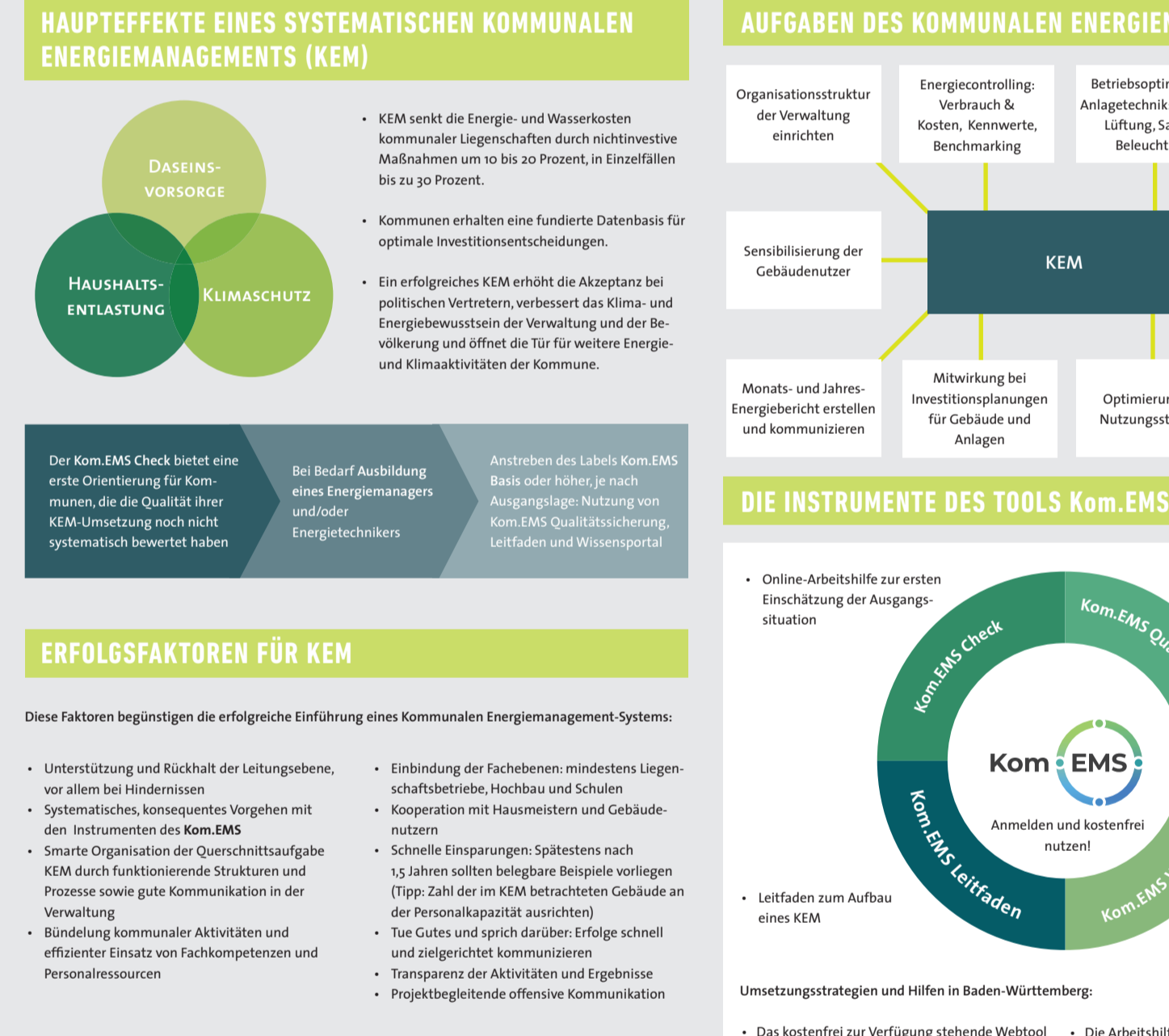


RECHTLICHE RAHMENBEDINGUNGEN

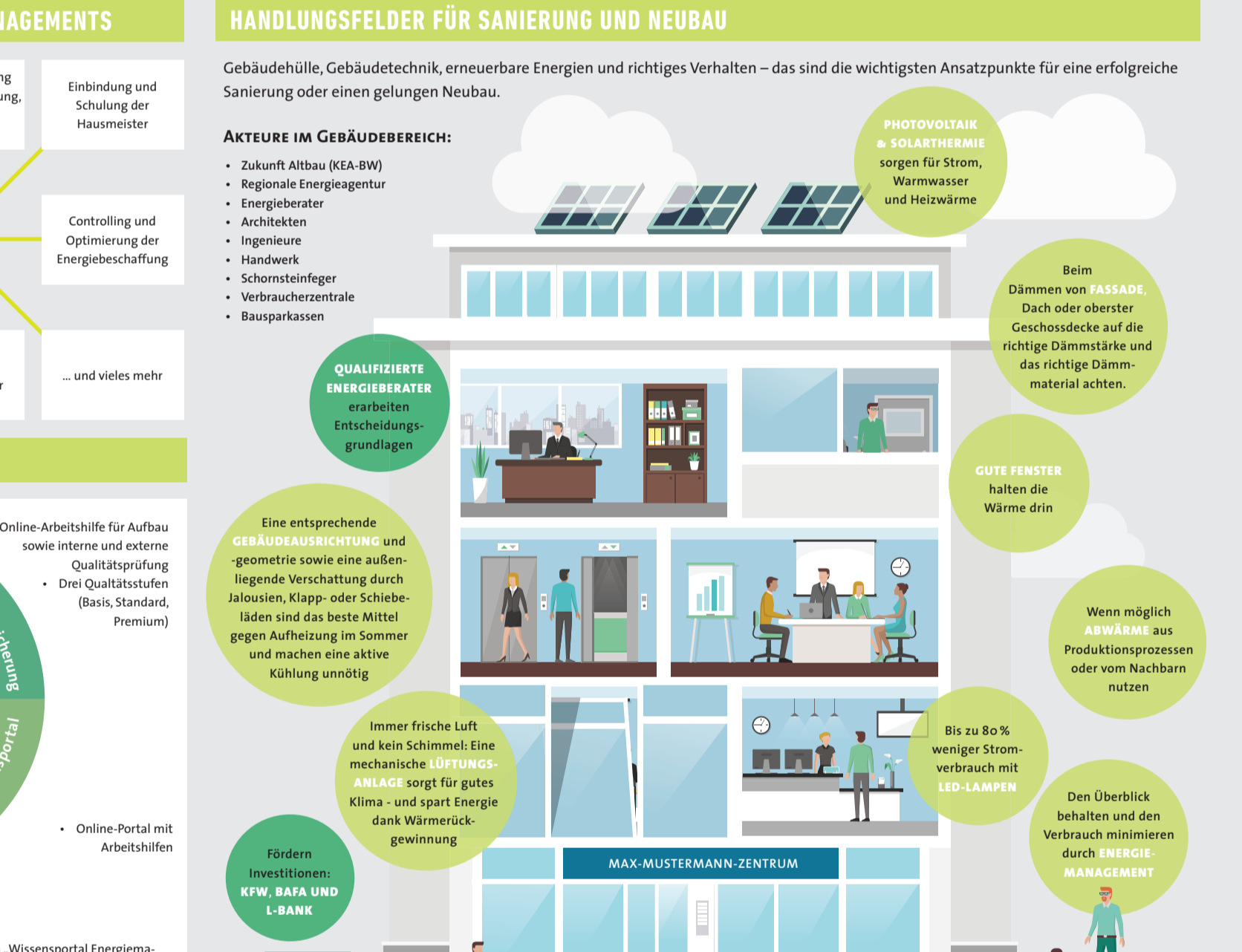
EINE STRUKTURIERTE ÜBERSICHT ÜBER DIE WICHTIGSTEN RECHTLICHEN RAHMENBEDINGUNGEN

ENERGIESEKTOR	GRÜBUN / HAUSHAALT	ERNEUERBARE ENERGIEN	MOBILITÄT
EU (Emissionshandel)	EU (Emissionshandel)	EU (Emissionshandel)	EU (Emissionshandel)
BUND	BUND	BUND	BUND
LAND	LAND	LAND	LAND

KOMMUNALES ENERGIEMANAGEMENT



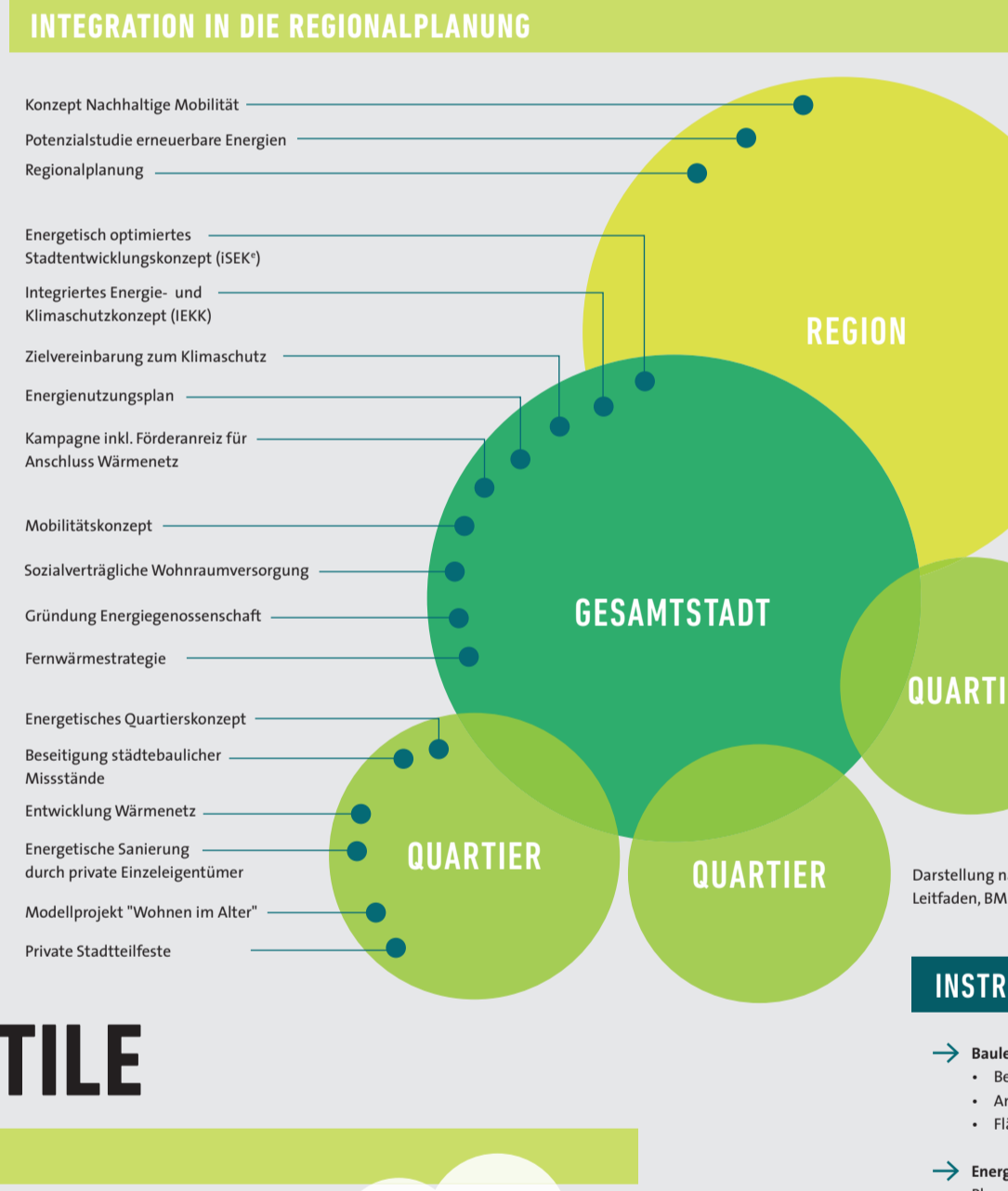
GEBÄUDE



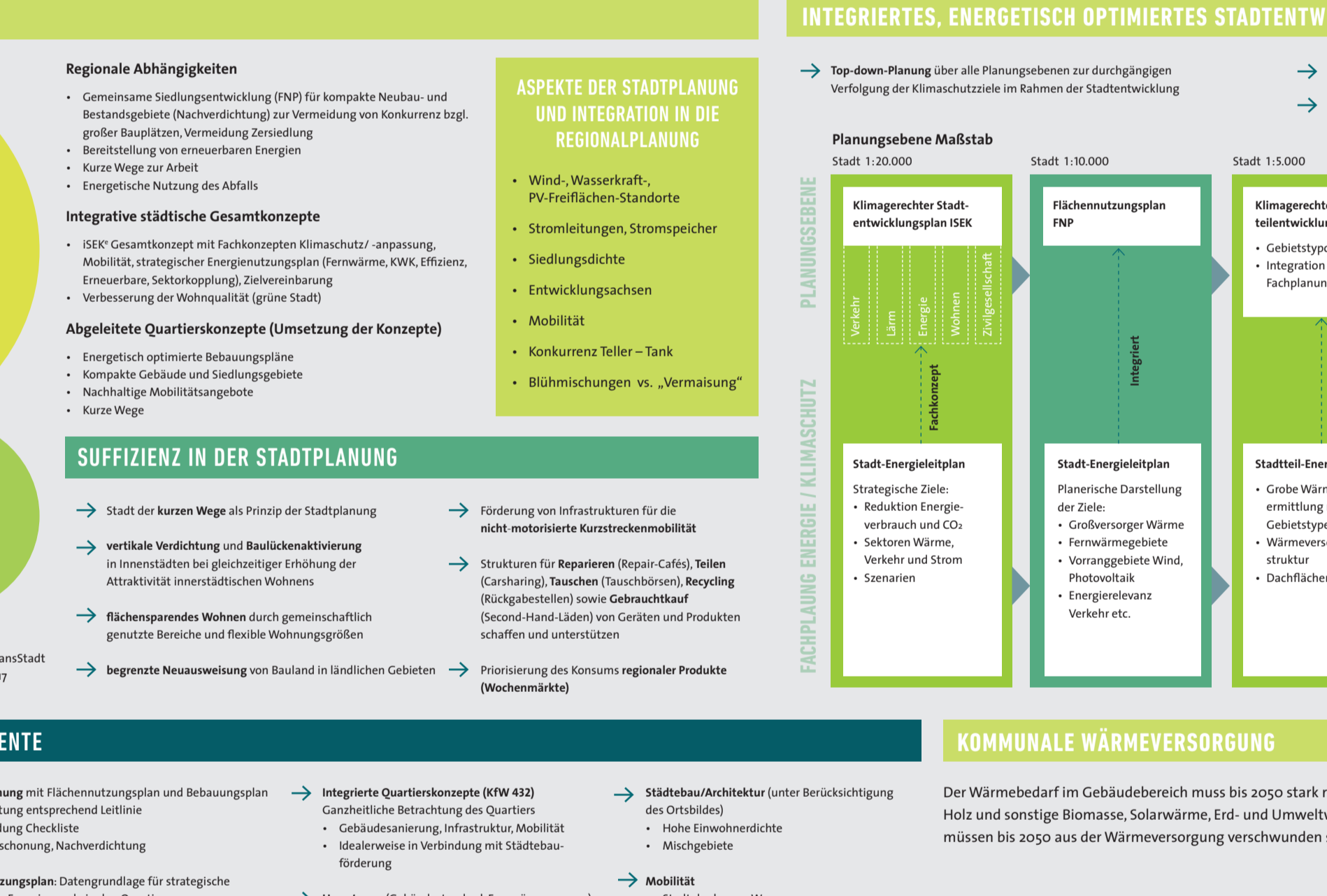
SCHULEN



STADTPLANUNG & STADTENTWICKLUNG



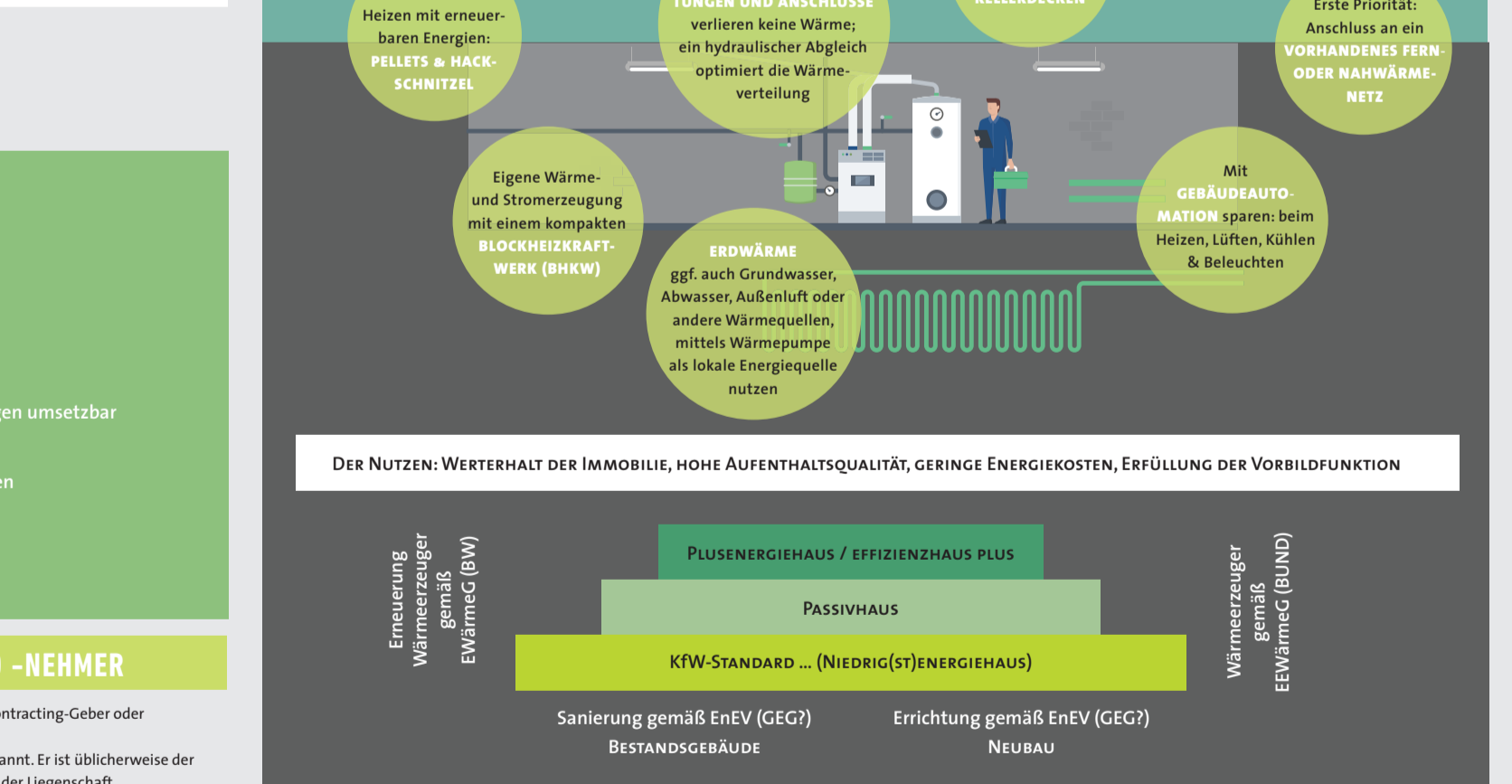
INTEGRIERTES, ENERGIEISCH OPTIMIERTES STADTENTWICKLUNGSKONZEPT (ISEK)



CONTRACTING



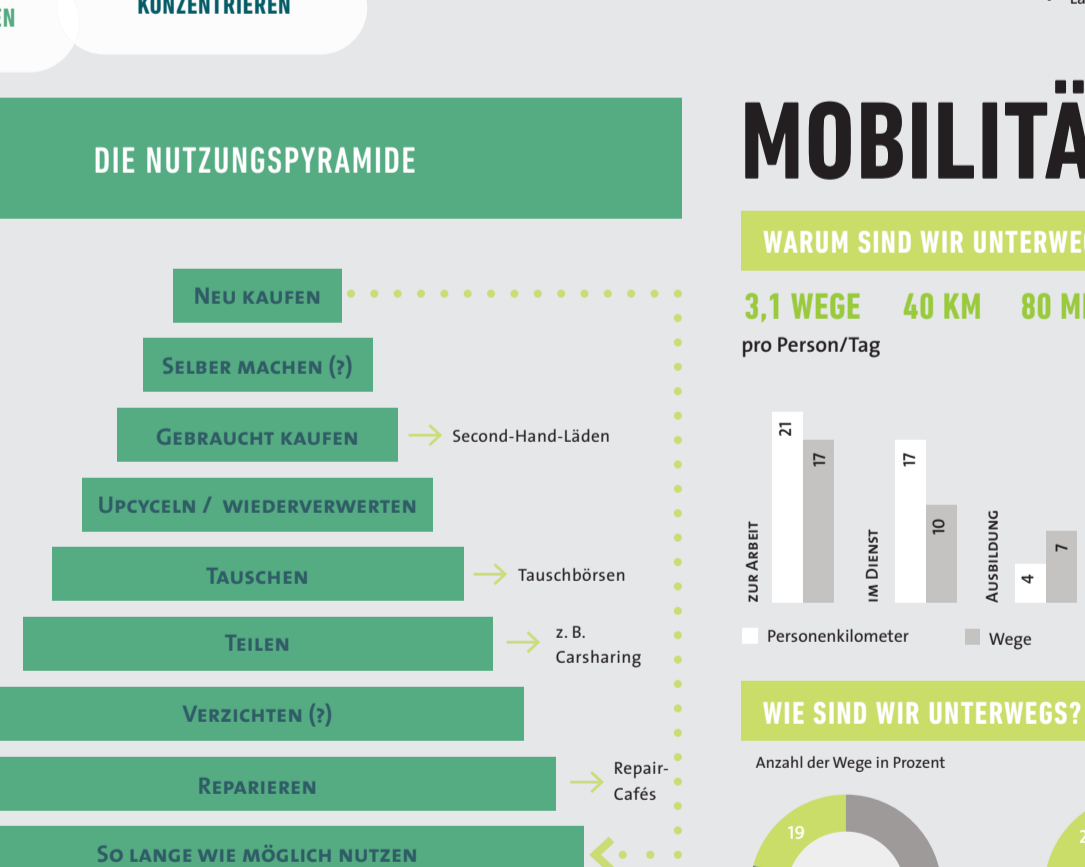
HAUSHALTE



SUFFIZIENZ & NACHHALTIGE LEBENSSTILE



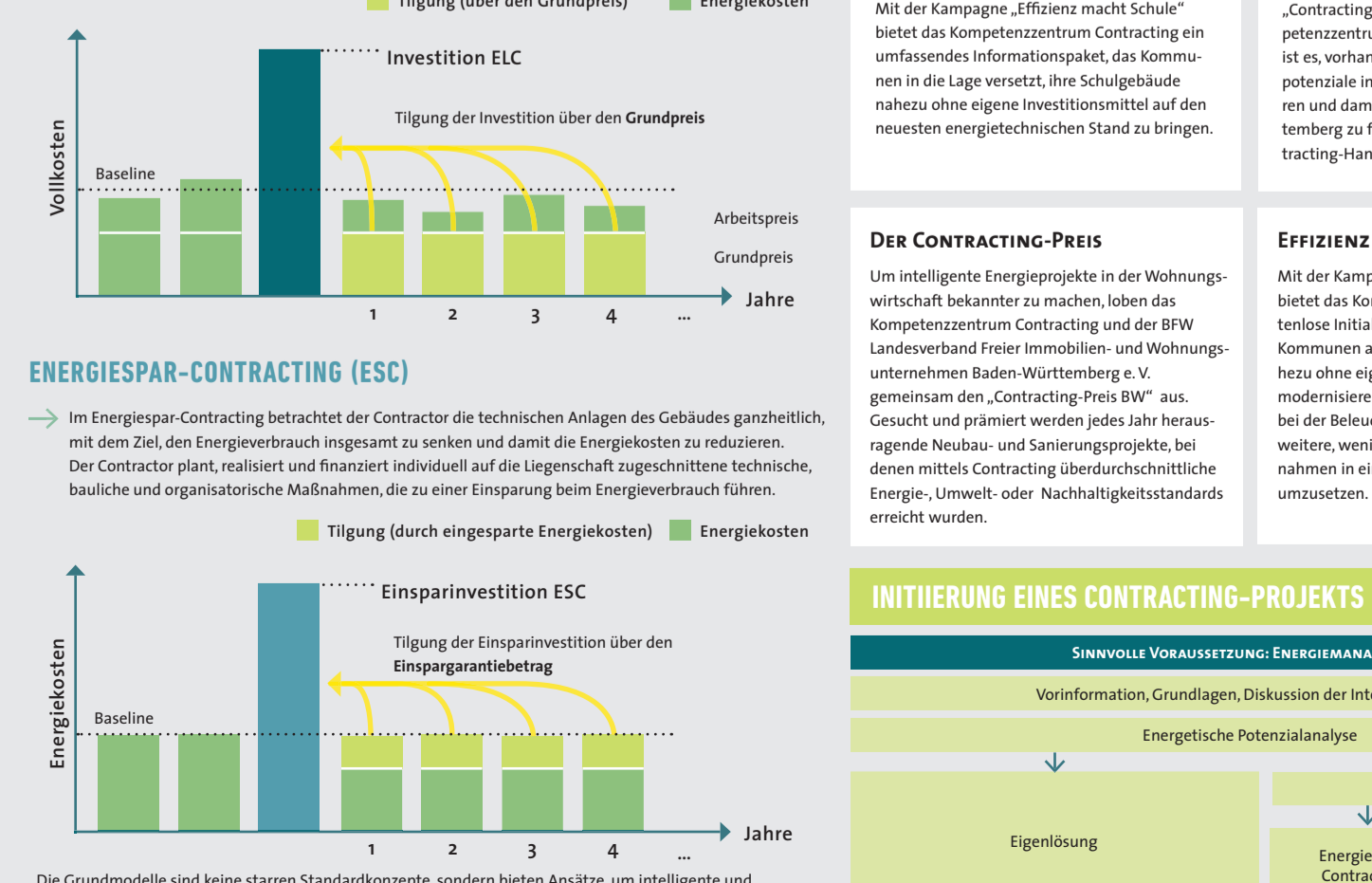
MOBILITÄT & VERKEHR



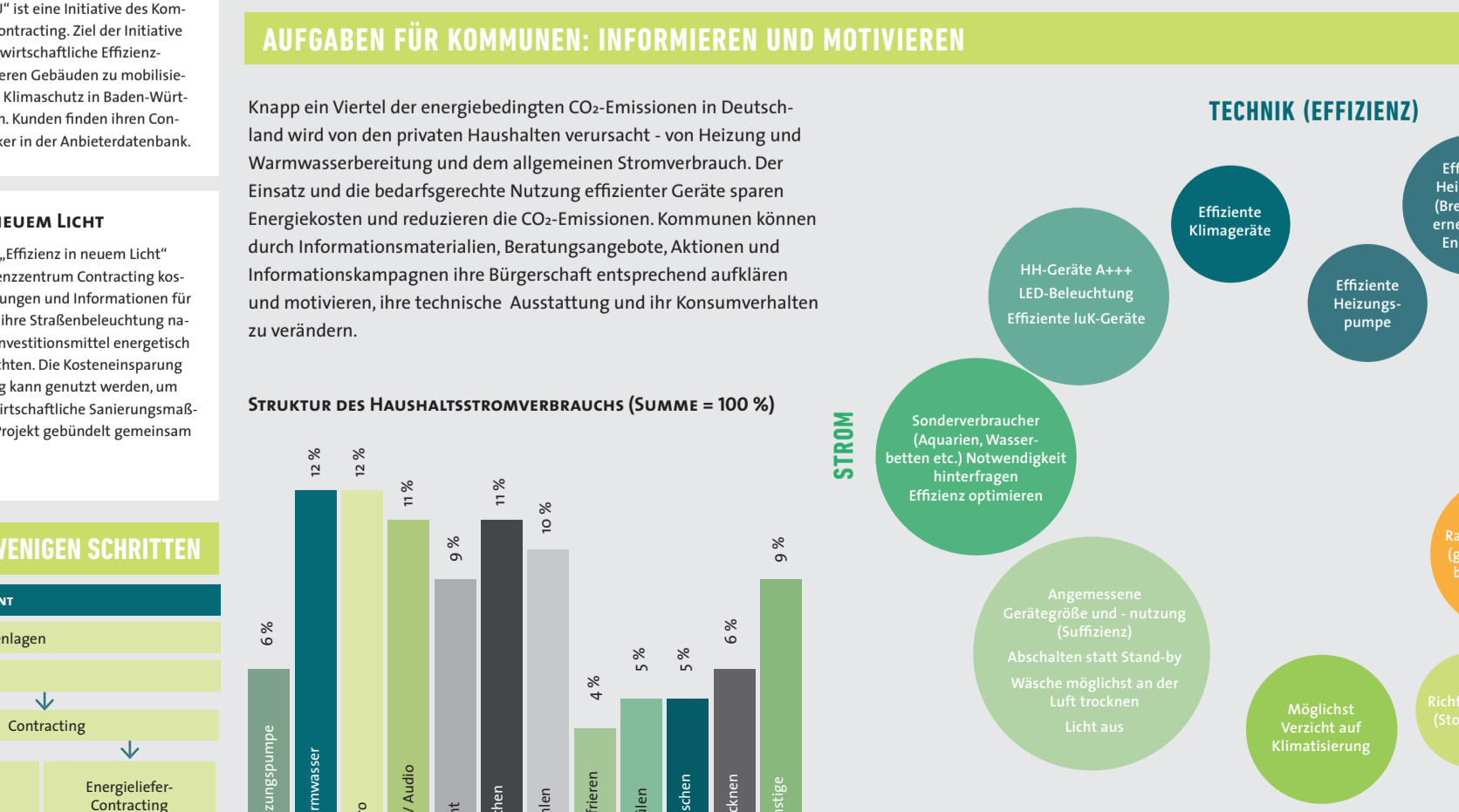
ENERGIEVERSORGUNG



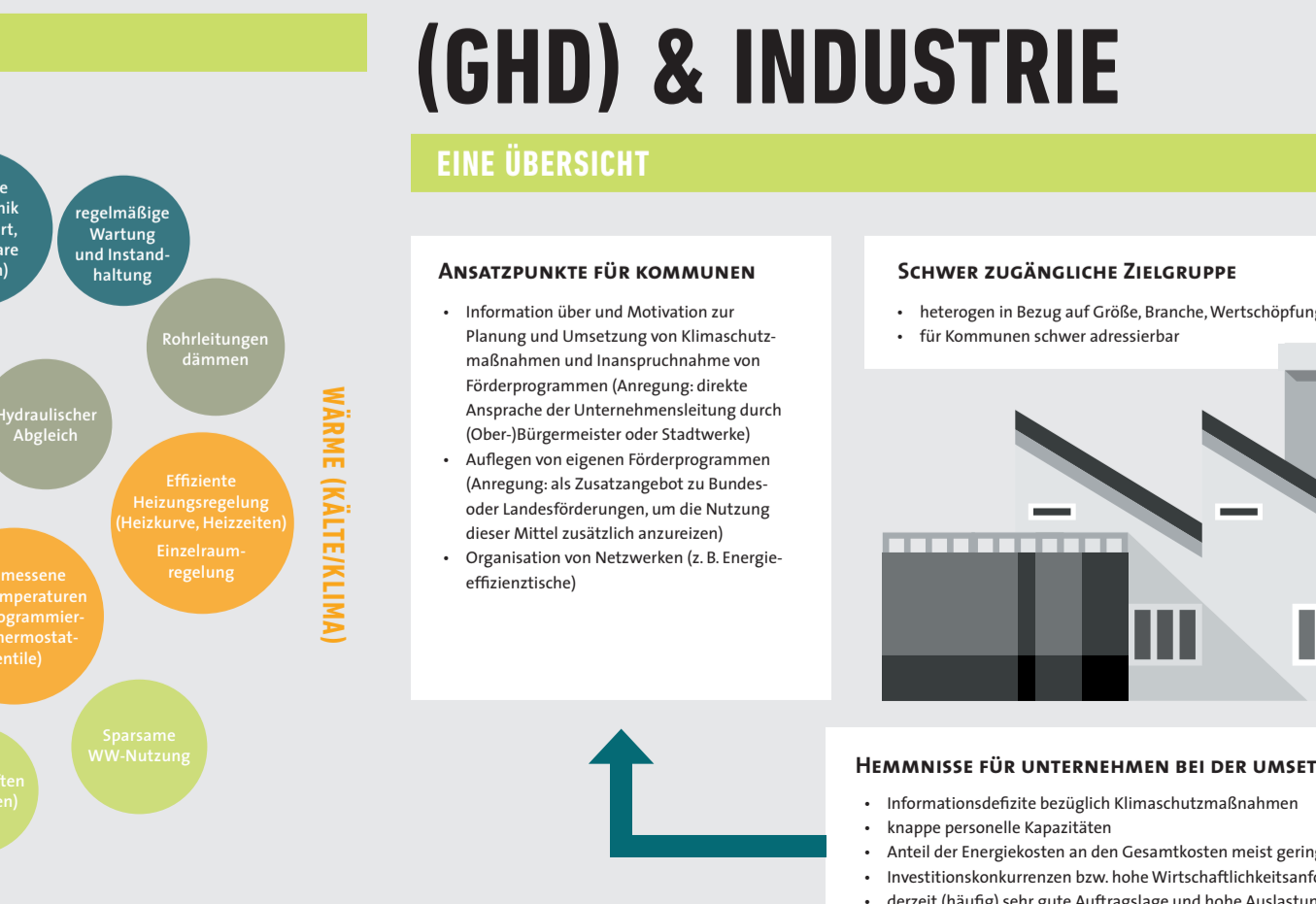
ENERGIELIEFER-CONTRACTING (ELC)



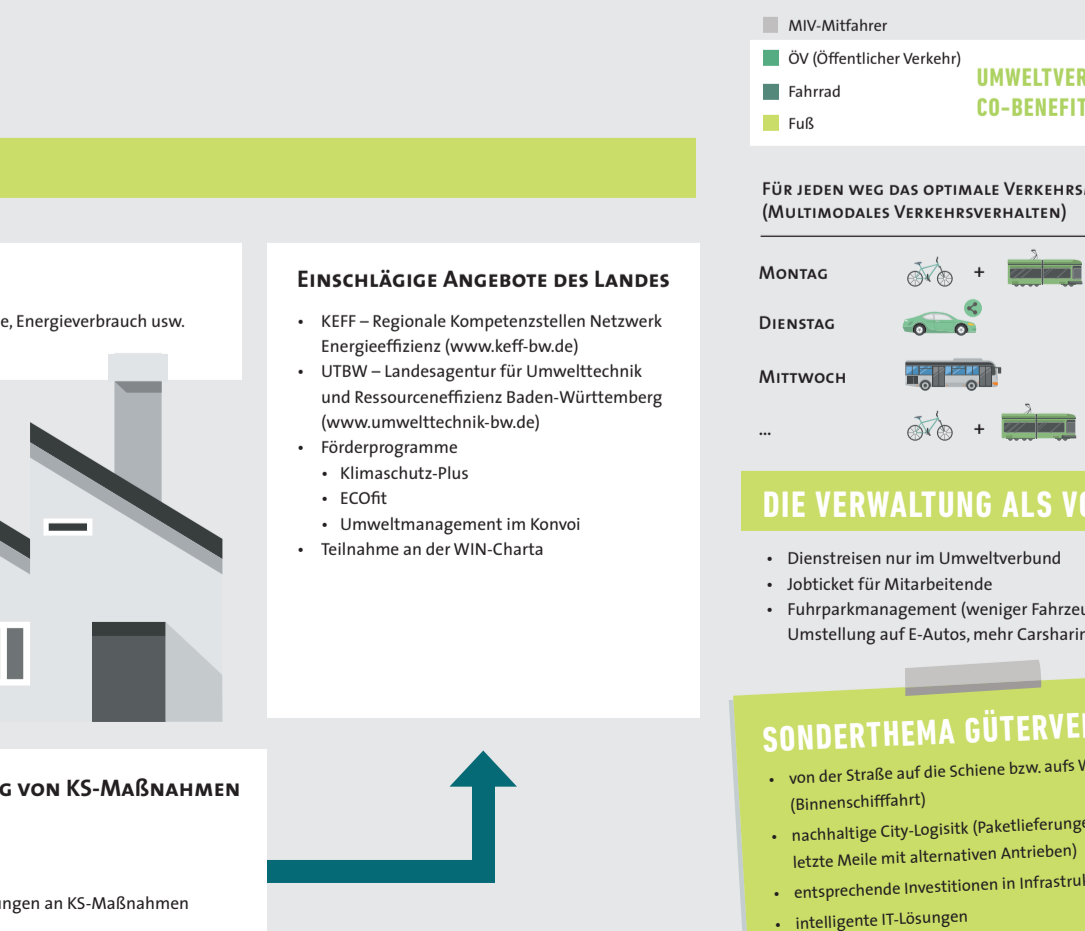
HAUSHALTE



GEWERBE, HANDEL, DIENSTLEISTUNGEN (GHD) & INDUSTRIE



MOBILITÄT & VERKEHR



ENERGIEVERSORGUNG

